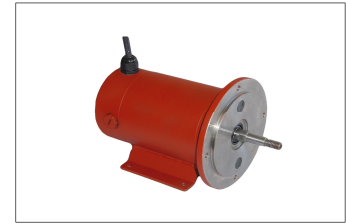


Permanent Magnet DC Motors

For 12 –72v DC Supplies

Totally enclosed—IP54



APPLICATION

For use in non-hazardous areas ,designed for operation on low voltage generated DC, battery, or solar power supplies. Typical applications include industrial trucks, auxiliary drives on road vehicles, hydraulic pump drives hoists etc.

RATINGS AND PERFORMANCE

The ratings and performance of STS motors are to EN60034-1 1998

INSULATION CLASS

Motors are wound with Class H insulation with Class F rise.

For operation in an ambient temperature range of –20°C. to +40°C.

SUPPLIES

12—72v battery or pure DC

ENCLOSURE AND COOLING

Protection to IP54

Cooling to IC 0041

MOUNTING ARRANGEMENTS

Motors are available with foot and/or flange mountings, with D type or C face mounting with metric dimensions to IEC 72-1

Other machines manufactured by STS

ATEX approved explosion-proof AC and DC motors, Dc motors up to 200 kW, DC generators and dynamometers

TYPICAL RATINGS FOR 24V MOTORS

kW.	SPEED	CONT	1HOUR	15 MIN
0.12	1500	P56M	P56S	P56S
	3000	P56S	P56S	P56S
0.18	1500	P56L	P56S	P56S
	3000	P56M	P56S	P56S
0.25	1500	P63M	P63S	P56L
	3000	P63M	P56L	P56S
0.37	1500	P63L	P63M	P63S
	3000	P63L	P63M	P63S
0.55	1500	P90S	P90S	P63L
	3000	P63L	P63L	P63S
0.75	1500	P90S	P90S	P90S
	3000	P90S	P90S	P90S
1.1	1500	P90L	P90S	P90S
	3000	P90L	P90S	P90S
1.5	1500	P90L	P90L	P90L
	3000	P90L	P90L	P90L
2.0	1500	-	P90L	P90L
	2000	-	P90L	P90L

Contact our Sales Department for other supply voltages in the range 12 –72v or for alternative duties.

STSmotors Ltd
Doulton Road, Cradley Heath, West Midlands B64 5QB

Tel: +44 (0) 1384 567755
Fax: +44 (0) 1384 567710
Email: motors@sts-international.co.uk

Permanent magnet DC Motors

Dimensions—Foot, Flange mounted

Fram e	H	A	B	C	K	AB	BB	AC	HB	LE	D	E	ED	F	G
P56S	56	90	71	36	7	105	85	78		189	11	23	9	4	8.5
P56M	56	90	71	36	7	105	85	78		216	11	23	9	4	8.5
P56L	56	90	71	36	7	105	85	78		243	11	23	9	4	8.5
P63S	63	100	80	40	7	120	100	108	99	204	14	30	14	5	11
P63M	63	100	80	40	7	120	100	108	99	239	14	30	14	5	11
P63L	63	100	80	40	7	120	100	108	99	274	14	30	14	5	11
P71S	71	112	90	45	7	132	110	129	105	223	14	30	14	5	11
P71M	71	112	90	45	7	132	110	129	105	277	14	30	14	5	11
P71L	71	112	90	45	7	132	110	129	105	331	14	30	14	5	11
M80S	80	125	100	50	10	150	175	145	115	300	19	40	30	6	15.4
M80 M	80	125	100	50	10	150	175	145	115	345	19	40	30	6	15.4
M80L	80	125	100	50	10	150	175	145	115	390	19	40	30	6	15.4
P90S	90	140	125	56	10	176	160	170	215	306	24	50	32	8	20
P90L	90	140	125	56	10	176	160	170	215	383	24	50	32	8	20