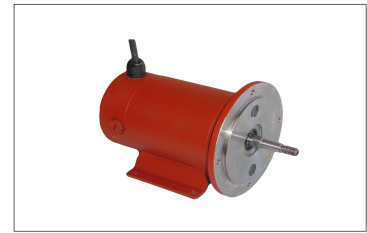


Permanent Magnet DC Motors

For 90 –180v DC Supplies

Totally enclosed—IP54



APPLICATION

For use in non-hazardous areas, designed for either variable speed duty on thyristor DC drive supplies, or fixed speed operation on generated DC, battery, or solar power supplies.

RATINGS AND PERFORMANCE

The ratings and performance of STS motors are to EN60034-1 1998

INSULATION CLASS

Motors are wound with Class H insulation with Class F rise.

For operation in an ambient temperature range of –20°C. to +40°C.

SUPPLIES

90-180v (battery or pure DC)

90-180v DC with form factors up to 1.5 (reduced output if no smoothing choke used).

ENCLOSURE AND COOLING

Protection to IP54

Cooling to IC 0041

MOUNTING ARRANGEMENTS

Motors are available with foot and/or flange mountings, with D type or C face mounting with metric dimensions to IEC 72-1

Other machines manufactured by STS

ATEX approved explosion-proof AC and DC motors, DC motors up to 200 kW, DC generators and dynamometers

TYPICAL RATINGS FOR 90-180V MOTORS - CONTINUOUS DUTY

kW.	SPEED	FF 1.05	FF 1.5
0.12	1500	P56M	P56M
	2000	P56M	P56M
	3000	P56M	P56M
0.18	1500	P71S	P71M
	2000	P56L	P56L
	3000	P56L	P56L
0.25	1500	P71M	P71M
	2000	P71S	P71M
	3000	P71S	P71M
0.37	1500	P71M	P71L
	2000	P71M	P71L
	3000	P71M	P71L
0.55	1500	M80L	P90S
	2000	M80M	M80L
0.75	1500	P90L	P90L
	2000	P90S	P90L
	3000	P90S	P90L
1.1	1500	P90L	-
	2000	P90L	-
	3000	P90L	-

Contact our Sales Department for other Supply voltages or for alternative duties

STSmotors Ltd
Doulton Road, Cradley Heath, West Midlands B64 5QB

Tel: +44 (0) 1384 567755
Fax: +44 (0) 1384 567710
Email: motors@sts-international.co.uk

